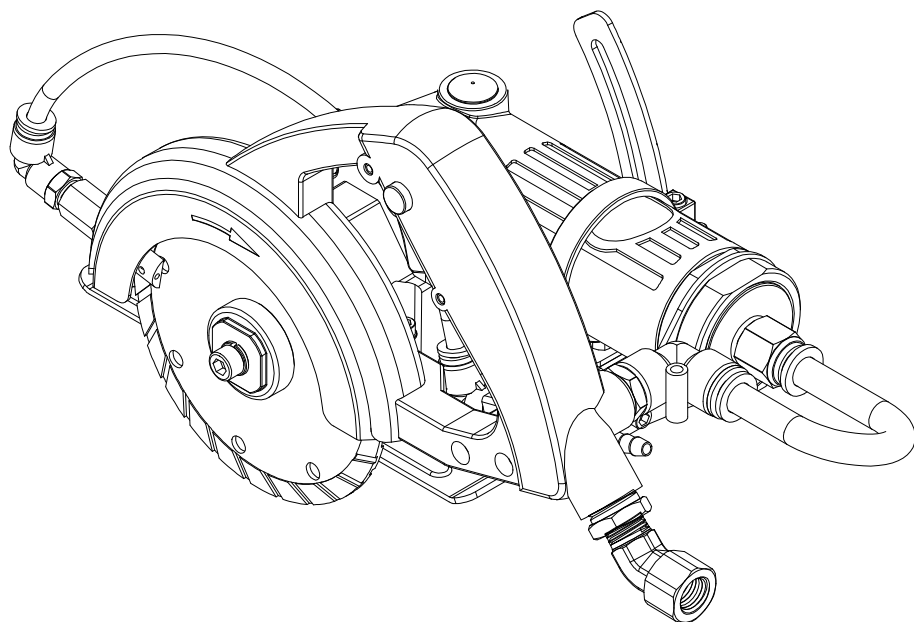




GPW-227

WET AIR CUTTING SAW

INSTRUCTION MANUAL



<http://www.gison.com.tw>

Table of Contents

Important Safety Instruction	1
Controls & Connections	2
Before Operation	3
Getting Start	4
Parts List	7
EC Declaration of Conformity	9

Important Safety Instruction

Read all instructions before using this tool. All operators must be fully trained in its use and aware of safety rules.

1) Maintenance

- Oil **3cc** lubricant (**SAE #10 or equivalence**) through air inlet before connecting the product to the air. Run the tool **15 seconds** to allow air circulating the oil and well lubricate the cylinder. This will ensure top performance and maximize durability of tool.
- Oil **3cc** lubricant through air inlet after use and run the tool **5 seconds** before storage.
- Clear & dry air allows the product perform at its best and extends the product life. A Filter/Regulator/Lubricator set is highly recommended.
- If the tool is in unusual condition, shut it off and disconnect its air hose immediately. Put a warning sign on the product until it gets repaired.
- Product repairing needs professional training and tool. Do not attempt to disassemble the product or it might be damaged.

2) User

- The user must be well trained and physically able to operate the product and aware of safety regulation.
- Use personal safety equipment such as goggle, earmuffs, mask & apron.
- Maintain a balanced body position and secure distance. Do not wear jewelry or loose clothing. Helmet is required if you wear long hair.

3) Compressed Air

- Do not operate the product with excess air pressure; standard air pressure is 90 psi (6.2 bar or 6.3kg/cm²).

- Always shut off air supply, drain hose of air pressure and disconnect product from air supply before changing accessories, making repairs or when the tool is not in use.
- Never direct air or product at yourself or anyone else.
- Whipping hose can be extremely dangerous and causes serious injury. Always check for damaged or loose hoses and fittings.

4) Product

- Do not adapt the product for other purpose; it might harm the product and the user.
- Do not adapt or remove the switch, level or any other component of the product; it might result in malfunctioning and harm the user.
- Do not use quick connect coupling on the product directly; use it only on the hose end.
- The product is not insulator; keep away from electricity.

5) Accessories

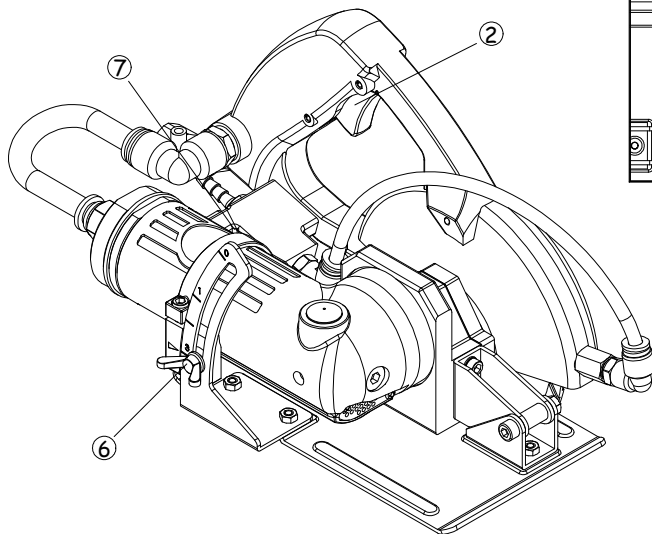
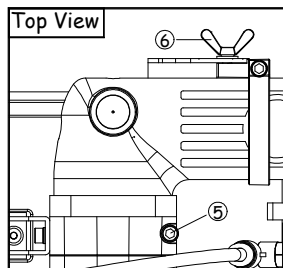
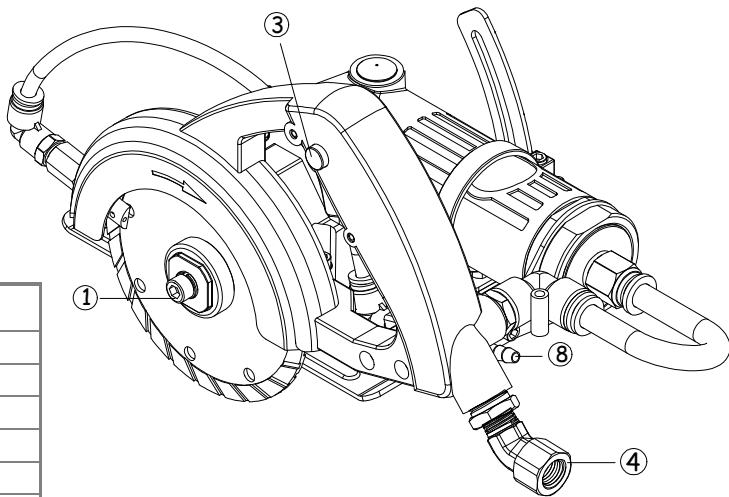
- Please use proper accessories, improper or unqualified accessories may damage the product, deteriorate performance and do harm to user.
- When replacing the accessories, use the tool attached with the product. Improper tool or incorrect ways of handling the tool (such as strike) may damage it.

6) Workplace

- Slip, trip & fall are major causes of serious injury or death; be aware of excess hose left on the walking or working surface.
- Workpiece must be fixed firmly; always keep no miscellaneous objects that could interfere with the operation.

CONTROLS & CONNECTIONS

No	Description
1	Fix Screw
2	Trigger
3	Trigger Lock
4	Air Inlet
5	Adjust Screw
6	Butterfly Screw
7	Water Valve Knob
8	Water Inlet



BEFORE OPERATION

Check the followings first:

1. Make sure the workplace is suitable to perform cutting work.
2. Verify if the capacity of air compressor could provide sufficient airflow rate for the tool.
3. Drain the water in compressor tank; fill the lubricator with oil (SAE#10 or equivalence) and make sure no rust or problem found in the compressor.
4. Check and adjust the operating pressure of compressed air; the best work pressure is 90 psi (6.2 bar or 6.3kg/cm²); excess air pressure may result in over-speed hazard.

Preparing Connections:



WARNING

Make sure the following procedures have been complied with respective instruction before operation

1. Workplace for operating cutting saw must comply with related safety & health regulation.
2. Connect tool to the air hose, water hose and air exhausting hose as the following steps:
 - 2-1 Connect water hose to water inlet: dip the hose end (about 3 cm long) in 95-100°C hot water for 10 seconds to soften the hose end; this could facilitate the hose to be easier connected to the water inlet. Be careful not to scald by the hot water.
 - 2-2 Make sure the air hose have been properly connected to air inlet of tool.
3. Connect air hose to air inlet:
 - 3-1 Remove any dust or particle found in the air hose and adapters to prevent from feeding particles into the tool and result in possible damage.
 - 3-2 Verify if the adapters are firmly secured on the hose; connect the hose between air compressor and tool.

GETTING START

Prepare the First Cutting:

WARNING

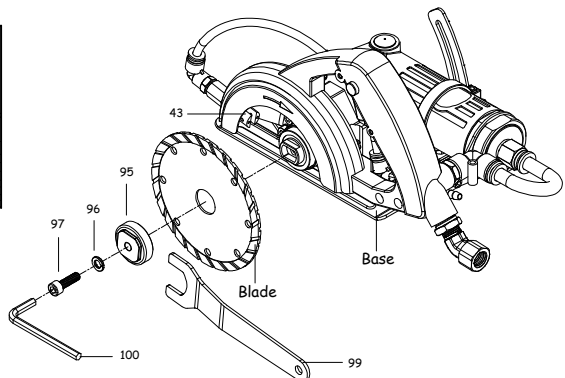
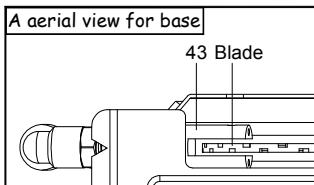
- To prevent from any possible injury to the user or damage the workpiece, always keep the cutting blade away from workpiece before opening the trigger.
- Make sure the operators keep in a safety distance from the cutting blade before feeding the air to the tool.

WARNING

- Always disconnect the air hose adapter before changing the cutting blade, repairing the tool or when the tool is not in use.
- Use personal safety equipment such as goggle, earmuffs, mask & apron in work.
- Choose proper cutting blade for different material of the workpiece.
- Never use a cutting blade marked with a speed lower than rating speed of tool
- Never use a broken or damaged cutting blade.
- If the tool drops by accident, check and verify carefully to make sure the tool works normally before proceeding your work

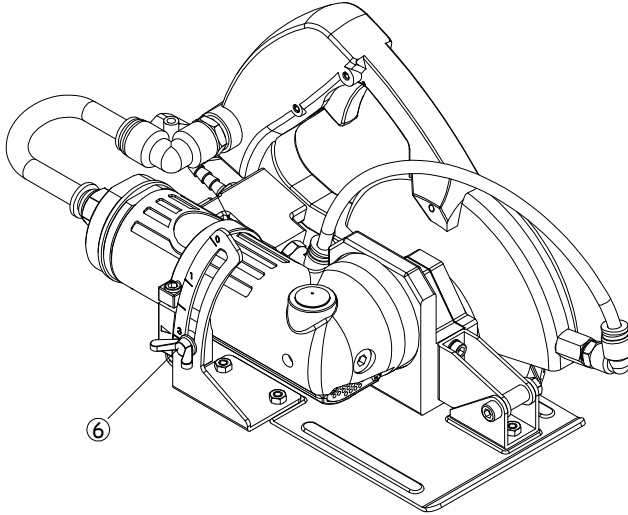
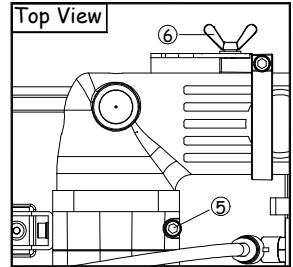
A. Install Cutting Blade

1. Stop the nut (95) with main shaft wrench (99)
2. Use Allen wrench (100) to loosen fix screw (97) clockwise, then remove spring washer (96) and nut (95).
3. Take the cutting blade away from the arbor and install a new blade
4. Put back nut (95), spring washer (96) and fasten fix screw (97) counter-clockwise.
5. After installation, turning blade by hand to ensure blade and (36th) Water Exit have been installed properly and matching.



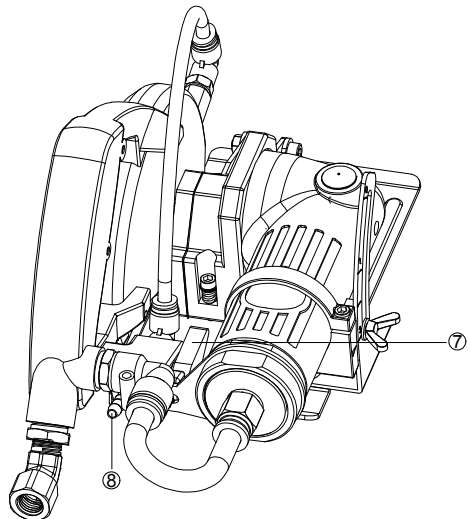
B. Adjust Cutting Depth

1. Loose the butterfly nut (6) to set the blade to the required cutting depth and fasten the butterfly nut
2. Use Allen wrench (100) to set the adjust screw (5) positioned on bottom plate to prevent butterfly nut (6) from loosening during long period of operation



C. Feed Water

Connect water hose to water inlet (8) and adjust the water valve knob (7) to feed water to the cutting blade.



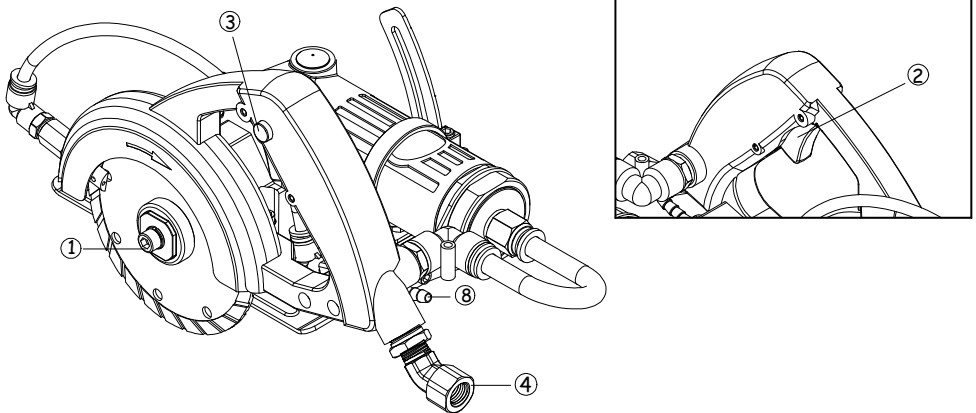
D. Feed Compressed Air

1. Check and verify if the fix screw (1) is tightly fastened.
2. Connect air hose to air inlet (4)

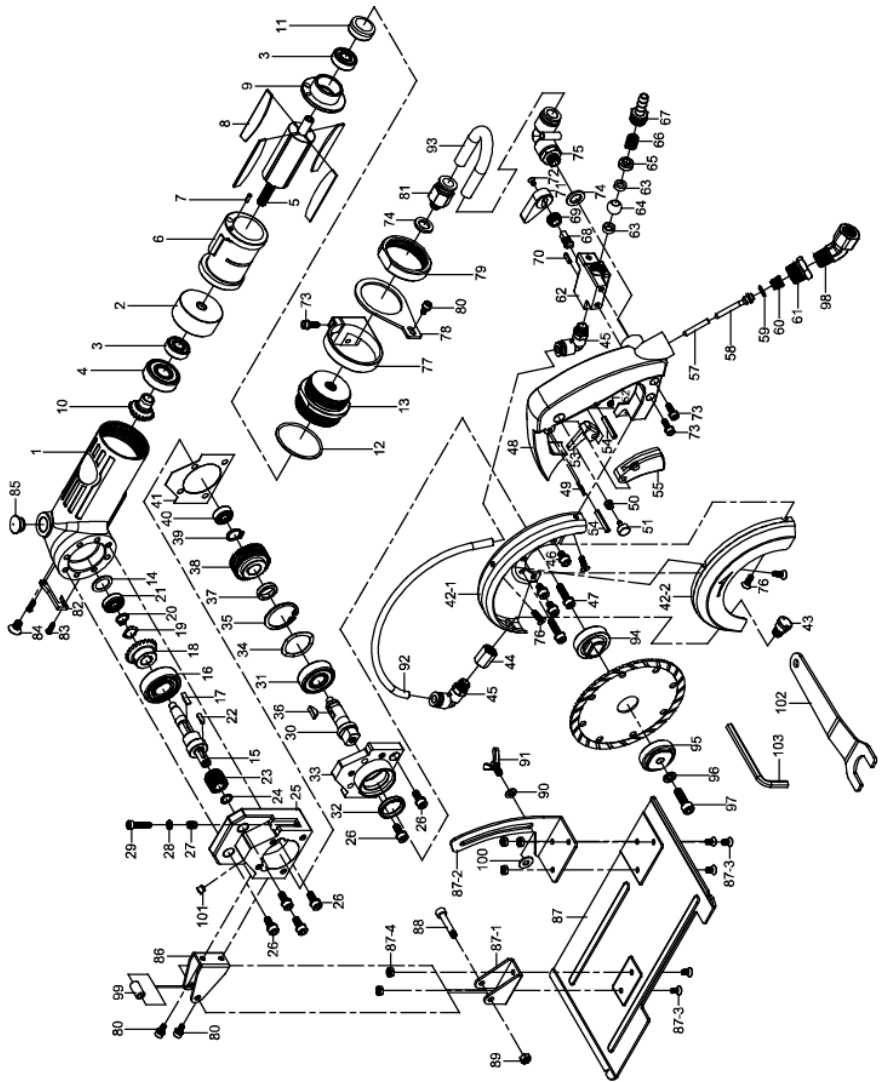
PRECAUTION

Prior to cutting, trial run the tool with free load for few seconds to visually check if cutting blade is fixed properly and the tool is running smoothly. Stop the tool immediately if any abnormal sound or vibration is found. Re-check the installation of cutting blade or consult with distributor for further assistance.

3. Press trigger (2) to check if the tool start running; keep your hand away from the cutting blade to prevent from injury.
4. To run tool continuously, first hold trigger (2) and trigger lock (3), second release trigger; then the tool can now work continuously; it eases finger off the long pressing fatigue.
5. Press trigger (2) to release trigger lock (3) when you need to return normal operation.



Parts List



Item	Part No.	Description	Qty	Item	Part No.	Description	Qty	Item	Part No.	Description	Qty
1	227832001	Body	1	37	227A10600	Spacer	1	73	CAP007	Allen Screw	3
2	8290023	Front Plate	1	38	227A10900	Spiral Gear	1	74	227A30600	Joint Washer	2-3
3	B608ZZ	Ball Bearing	2	39	C-12	Retaining Ring	1	75	227SQL1001	Quick Joint L-type	1
4	B620TZZ	Ball Bearing	1	40	B606ZZ	Ball Bearing	1	76	MT007	Screw	4
5	832024	Rotor	1	41	227A10201	Gasket	1	77	227A60000	Angle Setting Ring	1
6	8290022GH	Cylinder	1	42-1	227A70201	Disc Guard	1	78	227A40100	Fix Plate	1
7	SP025	Spring Pin	1	42-2	227A70201	Shroud	1	79	227A40200	Coupling Nut	1
8	829019	Blade	4	43	227A70001	Water Exit	1	80	CAP024	Allen Screw	3
9	829018	Rear Plate	1	44	227A70100	Water Exit Nut	1	81	227SQC1001	Quick Joint	1
10	832015	Pinion Gear	1	45	227SQL601	Quick Joint L-type	2	82	227A40300	Exhaust Cover	1
11	829015	Rubber Cap	1	46	CAP017	Allen Screw	3	83	TP-3X10	Self Tapping Screw	2
12	OR032	O-Ring	1	47	CAP016	Allen Screw	2	84	MT001	Screw	1
13	227A40000	Lock Ring	1	48	227A30100	Handle	1	85	221A20503	Cap	1
14	832019	Spacer	1	49	SP013	Spring Pin	1	86	227A10400	Joint Piece	1
15	227A10000	Main Shaft	1	50	S055	Spring	1	87	227A10501	Base	1
16	B620ZZZ	Bearing	1	51	227A30400	Push Button	1	87-1	227A10300	Support Frame	1
17	KR002	Key	1	52	227A30500	Fix Nut	1	87-2	227A60100	Angle Index	1
18	832010B	Bevel Gear	1	53	227A30200	Trigger Lock	1	87-3	MC010	Screw	5
19	WW10	Wave Washer	1	54	SP016	Spring Pin	2	87-4	NH4	Nut	5
20	C10	Retaining Ring	1	55	227A30300	Trigger	1	88	CAP040	Allen Screw	1
21	B626ZZ	Ball Bearing	1	57	227A30101	Pin	1	89	NH5	Nut	1
22	KC004	Key	1	58	832059	Pin	1	90	TSX10	Flat Washer	1
23	227A10800	Spiral Gear	1	59	OR034	O-Ring	1	91	MR5X10	Butterfly Nut	1
24	C8-1	Retaining Ring	1	60	S022	Spring	1	92	227AH06	Water Pipe	1
25	227A10100	Gear Box	1	61	832057	Air Inlet Screw	1	93	227AH10	Air Inlet Pipe	1
26	CAP005	Allen Screw	6	62	227A50000	Water Valve Seat	1	94	227A20400N	Disc Receiver (22 mm)	1
27	S072	Spring	1	63	221A20100	Bushing	2	95	227A20401	Disc Nut	1
28	T4X8	Flat Washer	1	64	221A20101	Ball Valve	1	96	SPW6	Spring Washer	1
29	CAP033	Allen Screw	1	65	227A60300	Copper Bushing	1	97	CAP041	Allen Screw	1
30	227A10700	Gear Shaft	1	66	S073	Spring	1	98	227TB4502	Air Joint	1
31	B620TZZ	Ball Bearing	1	67	227A60200	Water Valve Joint	1	99	227A10401	Bushing	1
32	SG019	Oil Seal	1	68	221A20200	Shaft	1	100	227A60200	Stopper	1
33	227A10200	Gear Seat	1	69	227A60100	Screw	1	101	221A10800	Grease Hole	1
34	WW24	Wave Washer	1	70	SP001	Spring Pin	1	102	301T60000	Stop Spanner	1
35	R32	Retaining Ring	1	71	227A50400	Water Valve	1	103	420068	Allen Wrench	1
36	KR006	Key	1	72	MT005	Screw	1				

* To order parts, please mark both **Part No.** and **Description.**



EC DECLARATION OF CONFORMITY

Manufacturer : **GISON MACHINERY CO., LTD.**

Address : No.6, Alley 105, Lane 68, Sec.2, Sinan Road, Wurih, Taichung 414, Taiwan

Tel: 886-4-23353202 Fax: 886-4-23352252

Declares that the machinery described :

Model : **GPW-227**

Name : **Wet Air Cutting Saw**

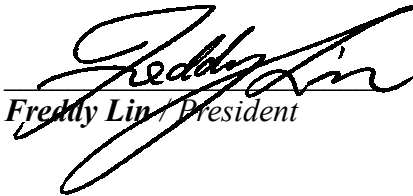
Conforms to the following directives : **Machinery Directive 2006/42/EC**

Refer to the following standards : **EN 792-7**

Place and Date of Issue : GISON Machinery Co., Ltd.

March. 22, 2010

Signature of Issuer

A handwritten signature in black ink, appearing to read 'Freddy Lin', is written over a horizontal line. The signature is fluid and cursive.

Freddy Lin / President

PNEUMATIC TOOLS SAFETY INSTRUCTION

The goal of **GISON Machinery Co., Ltd.** is to produce tools that help you work safely and efficiently. The most important safety device for this or any tools is **YOU**, Your care and good judgment are the best protection against injury. All possible hazards cannot be covered here, but we have tried to highlight some of the important ones.

Air Supply and Connection Hazards

- Air under pressure can cause severe injury.
- Be sure that switch is at "**OFF**" position before connect with air supply system.
- Always shut off air supply, drain hose of air pressure and disconnect tool from air supply when not in use, before changing accessories or when making repairs.
- Never direct air at yourself or anyone else.
- Whipping hoses can cause serious injury, always check for damaged or loose hoses and fittings.
- Do not use quick disconnect couplings at tool. See instruction for correct set-up.
- Whenever universal twist couplings are used, lock pins must be installed.
- Do not exceed maximum air pressure of 90 psi/6.2 bar or as stated on tool nameplate.

Projectile Hazards

- Always wear impact resistant eye and face protection when involved with or near the operation, repair or maintenance of the tools or changing accessories on the tool.
- Be sure all others in the area are wearing impact-resistant eye and face protection.
- Even small projectiles can injure eyes and cause blindness.
- Accessory bursts may be to cause serious injury.

Entanglement Hazards

- Keep away from rotating spindle and accessory.
- Do not wear jewelry or loose clothing.
- Scalping can occur if hair is not kept away from tool and accessories.
- Choking can occur if neckwear is not kept away from tool and accessories.

Operating Hazards

- Avoid direct contact with rotating spindle and accessory to prevent cutting of hands or other body parts. Wear gloves to help protect hands.
- Do not disable the safety lock off feature on the throttle lever.
- This tool and its accessories must not be modified.
- The liability of manufactory lapses if the user uses spare parts that are not identical with the original.
- Operators and maintenance personnel must be physically able to handle the power of the tool and capable of performing the job task.

Workplace Hazards

- Slip/Trip/Fall is a major cause of serious injury or death. Be aware of excess hose left on the walking or work surface.
- High sound levels can cause permanent hearing loss. Use hearing protection as recommended by your employer.
- Regarding the dangers to vibration. User have to obey the Labor Safe operational instruction that depend on defferent country rule to setting.
- Maintain a balanced body position and secure footing.
- Repetitive work motions, awkward positions and exposure to vibration can be harmful to hands and arms, if numbness, tingling pain or whitening of the skin occurs, stop using tool and consult a physician.
- Avoid inhaling dust or handling debris from work process that can be harmful your health.
- Operators and maintenance personnel must be physically able to handle the bulk weight and power of this tool.
- This tool is not intended for use in explosive atmospheres and is not insulated for contact with electric power sources.

DO NOT DISCARD - GIVE TO USER



GISON MACHINERY CO., LTD.

No.6, Alley 105, Lane 68, Sec.2, Sinan Rd., Wurih, Taichung 414, Taiwan

Tel: +886-4-23353202 Fax: +886-4-23352252

E-Mail: gison@seed.net.tw Website: <http://www.gison.com.tw>