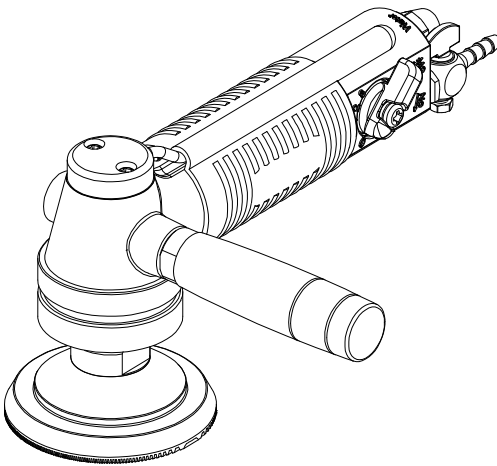


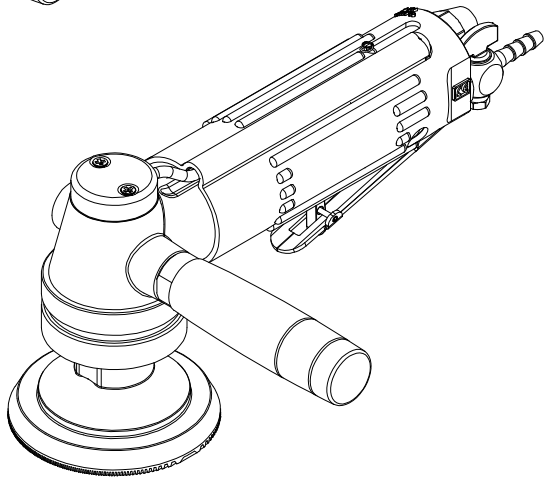
Pneumatic Wet Sander

(4,500 rpm)

Operation Instruction



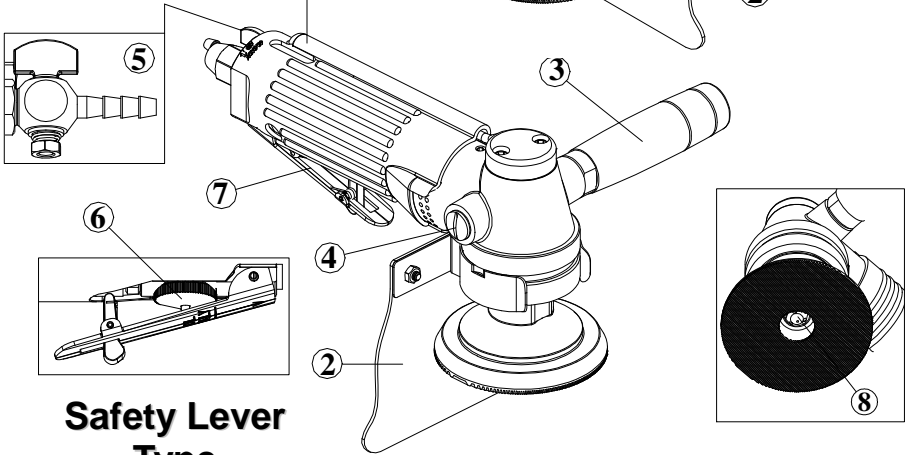
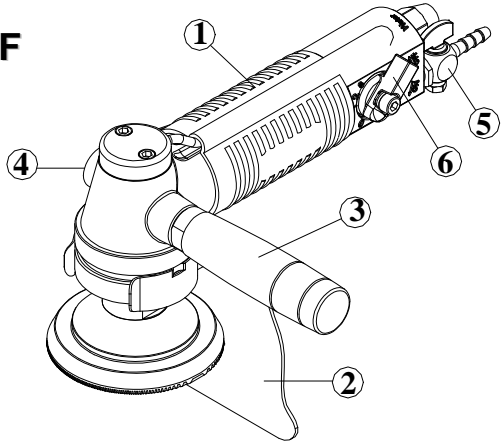
**ON / OFF
Type**



**Safety Lever
Type**

Features

**ON / OFF
Type**

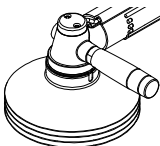


**Safety Lever
Type**

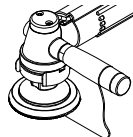
① **Rubber Sleeve**

Ergonomic handle comforts the users hand, its excellent material performs anti-acidity, anti-alkalinity and anti-salt.

② **Water Shroud**



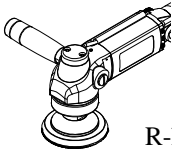
Water guard



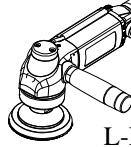
Water Shroud

Water Shroud or Water Guard protects fabricator from harm of splash mud. They are optional accessories.

③ Side Handle



R-handle



L-Handle

Side Handle can be fixed at right or left side of the tool according to users' preference.

④ Lubricate Gear from side handle holes.

Filling grease oil directly from either side of handle hole. Fabricator can maintain the tool easily & efficiently.

⑤ Water Regulator

Adjust water flow by switching Water Regulator according to polishing purpose.

⑥ On/Off Switch & Air Regulator

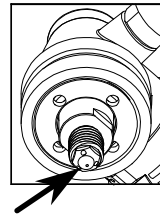
Start the tool by switching On/Off Air Regulator, suitable for continuous operation, speed can be adjusted on the same switch as well.

Air Regulator under Safety Lever of safety lever type performs air flow control only.

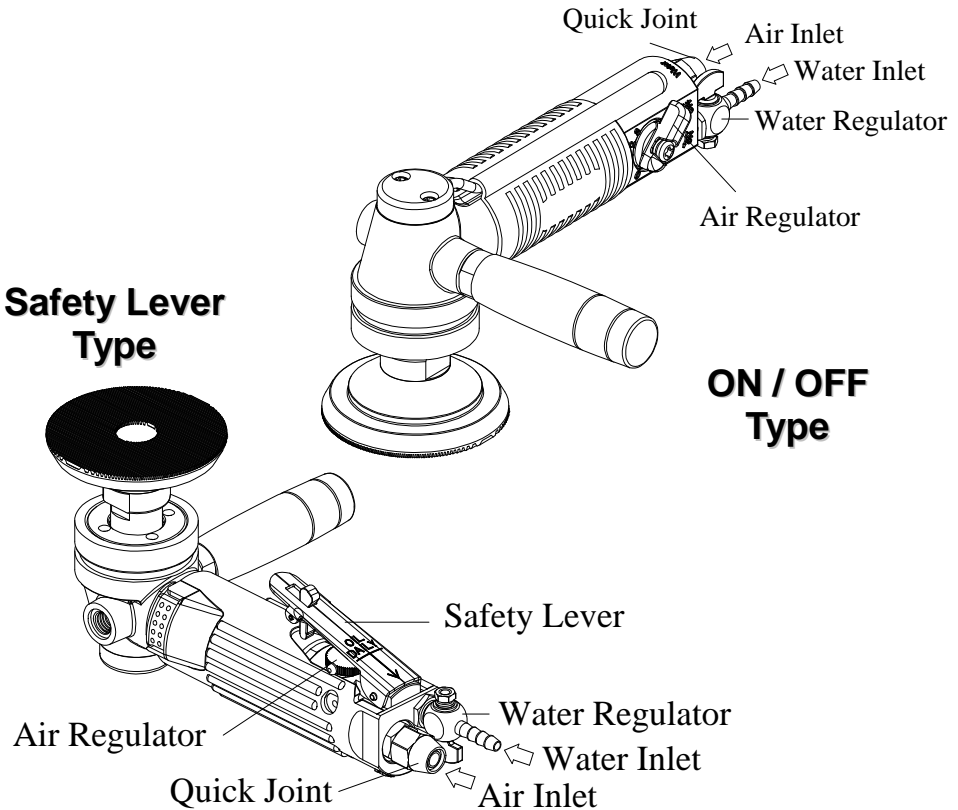
⑦ Safety Lever

Safety Lever prevents the hazard of miss triggering. **Central Waterfed**

3 water exits on the spindle delivers large amount of water, it creates high performance and reduce dust. Water Exit can be taken off and cleaned up.



Functions



1. Connect Air Inlet to air source.
2. Connect Water Valve to water hose.
3. **ON/OFF Type:** Switch **Air Regulator** to start the tool, adjust air flow to obtain proper speed.

Safety Lever Type: Press **Safety Lever** and adjust the **Air Regulator** to obtain proper speed.

Read this instruction before operate the tool.

Installation

1. Attach side handle to the body.
2. Connect the polisher pointwise as follows.
 - 2.1) Connect the water hose. Warm up the hose with hot water to facilitate the connection. (Be careful with the hazard of hot water)
 - 2.2) Guide the air hose through air hose nut and connect air hose onto the joint. Tighten the nut, make sure that the air hose can not be pulled out.

3. Disc Set-Up

Warning - For safety concern, be sure to turn off air valve and disconnect air source

Mount the provided spanner on the spindle, fix the backer pad clockwise by hand. Attach the disc to the pad.

4. Check the air intake function (Safety lever type)

Push the switch trigger backward then push the switch lever down to start the tool. The air shuts automatically when lever released.
5. Check the switch function (On/Off type)

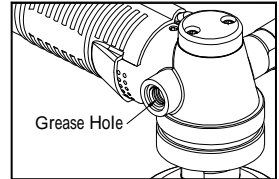
For safety concern, make sure that the switch is **OFF** before polisher connected to the air source. Make sure that the switch is off whenever this tool is not in use.
6. Connect air hose to air source.
 - 6.1) Keep particle of stone or dust away from hose & plug, or FOD (Foreign Object Damage) might cause.
 - 6.2) Connect the air hose to the air source, before connecting, make sure the air hose is not damaged and the coupler is tightly clamped.

7. Test Running

Before work on polished object, run the polisher freely for 10-15 seconds to obtain its best balance.

Maintenance

- Before using, oil 20 ml air-line lubricator SAE#10 through air inlet, run the tool for 10-15 seconds to allow cylinder well lubricated. Repeat it after tool used.
- Unscrew **handle Screw** and grease the gear every week to extend durability of gear.
- Install proper air compress system according to total air consumption needed in your working yard. (Standard air pressure 90 psi)
- Clear & dry air is essential for air tool, compressor with Water-Drain is strongly suggested.
- A F.R.L. unit can keep the life of the product longer. Consult to your distributor for the F.R.L. unit.
- Supply tool with 90 psi (6.2 bar) of clean, dry air. Higher Pressure drastically reduces tool life and lower pressure may reduce the performance of the product.



Safety Rules

Please read and follow the instructions listed in this instruction before using the product and the user must be trained well. The supplier and the distributor are free from the responsibilities for any damage if the customer is not compliance with the instructions.

1. Air Supply and Connection Hazards:

- 1.1) Excess air pressure can cause severe injury.
- 1.2) Always shut off air supply, drain hose of air pressure and disconnect tool from air supply when not in use, before changing accessories or when making repairs.

- 1.3) Never direct air at yourself or anyone else.
- 1.4) Whipping hoses can cause serious injury, always check for damaged or loose hoses and fittings.
- 1.5) Do not use quick disconnect couplings at tool. See instruction for correct set-up.
- 1.6) Do not exceed maximum air pressure of 90 psi/6.2 bar or as stated on tool.

2) *Projectile Hazards:*

- 2.1) Always wear personal safety equipment such as goggle, earmuffs, mask & apron and be sure all others in the area are the same.
- 2.2) Even small projectiles can injure eyes and cause blindness.
- 2.3) Be aware that an accessory that bursts can cause injury. Especially when the accessory are used for a while and being damaged.

3) *Operating Hazards:*

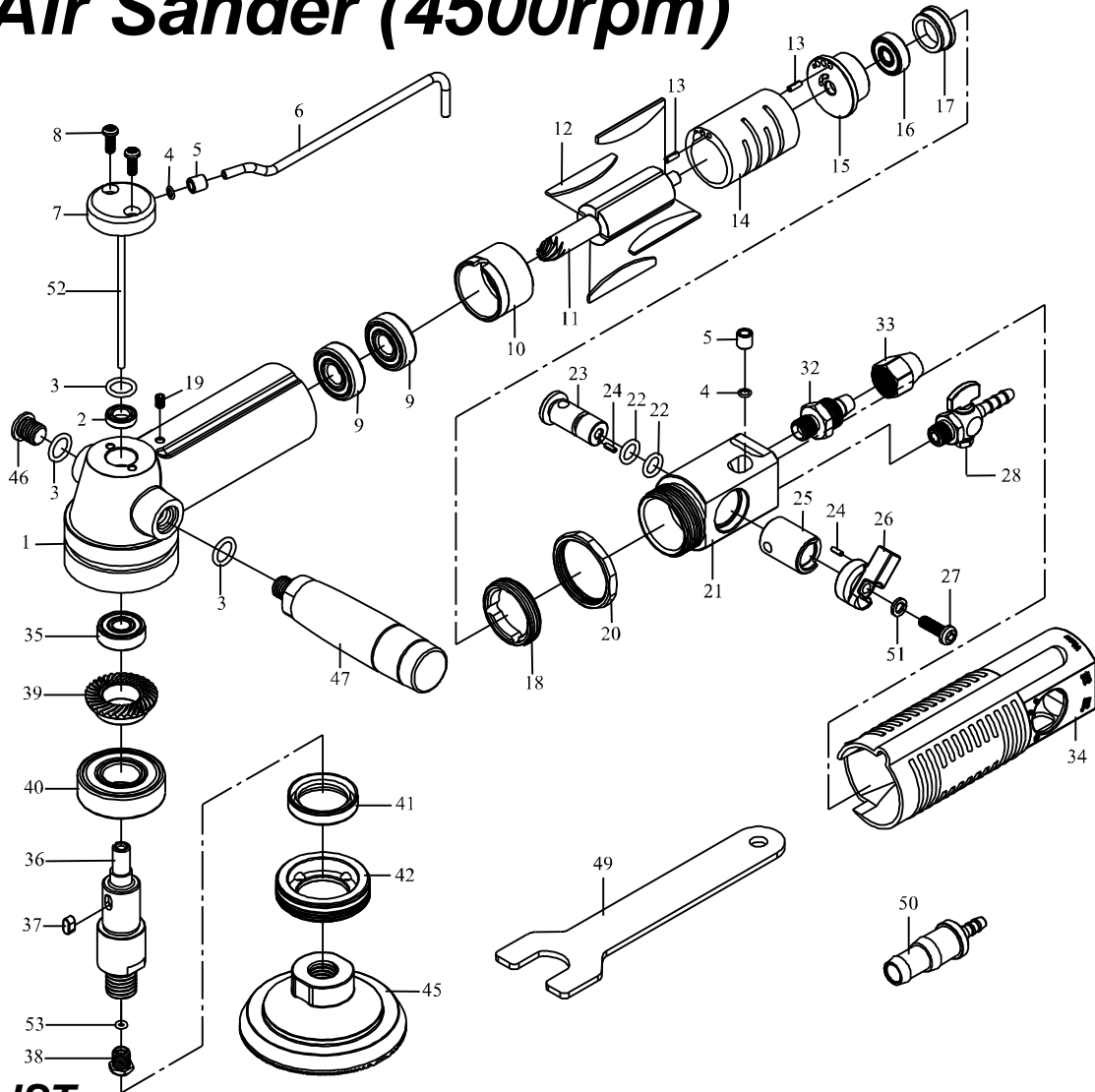
- 3.1) Never mount improper or poor quality attachment such as diamond disc on the product. Any accessories that burst can cause very serious injury or death.
- 3.2) To prevent cutting of hands or other part of body, avoid directly contacting with rotating spindle and the attachment to the product. Wear gloves to help protect hands.
- 3.3) Do not remove, disable or adapt any components of the product, any spare parts that are not identical with the original might damage the user and the product.
- 3.4) Do not adapt the product for other purpose, it might damage the user and the product.
- 3.5) Operators and maintenance person must be aware of safety regulation and physically able to handle the bulk weight and power of this tool.

4) Workplace Hazards:

- 4.1) Slip/Trip/Fall is a major cause of serious injury or death. Pay attention to excess hose left on the walking or work surface.
- 4.2) Working object must be firmly fixed, always keep no miscellaneous objects that could interfere the operation.
- 4.3) High sound levels can cause permanent hearing loss. Use earmuffs as recommended by your employer.
- 4.4) Regarding the dangers to vibration. User has to follow the Labor Safe operational instruction that differs from countries.
- 4.5) Maintain a balanced body position and secure distance, Do not wear jewelry or loose clothing. Helmet is required if you wear long hairs.
- 4.6) Repetitive work motions, awkward positions and exposure to vibration can be harmful to hands and arms, if numbness, tingling pain or whitening of the skin occurs, stop using tool and consult a physician. Avoid inhaling dust or handling debris from work process that can be harmful your health. Wearing a mask during work is strongly suggested.
- 4.7) This tool is not intended for use in explosive atmospheres and is not insulated for contact with electric power sources.

The liability of manufactory and distributor lapses if the user do not follow the following safety instruction.

Wet Air Sander (4500rpm)



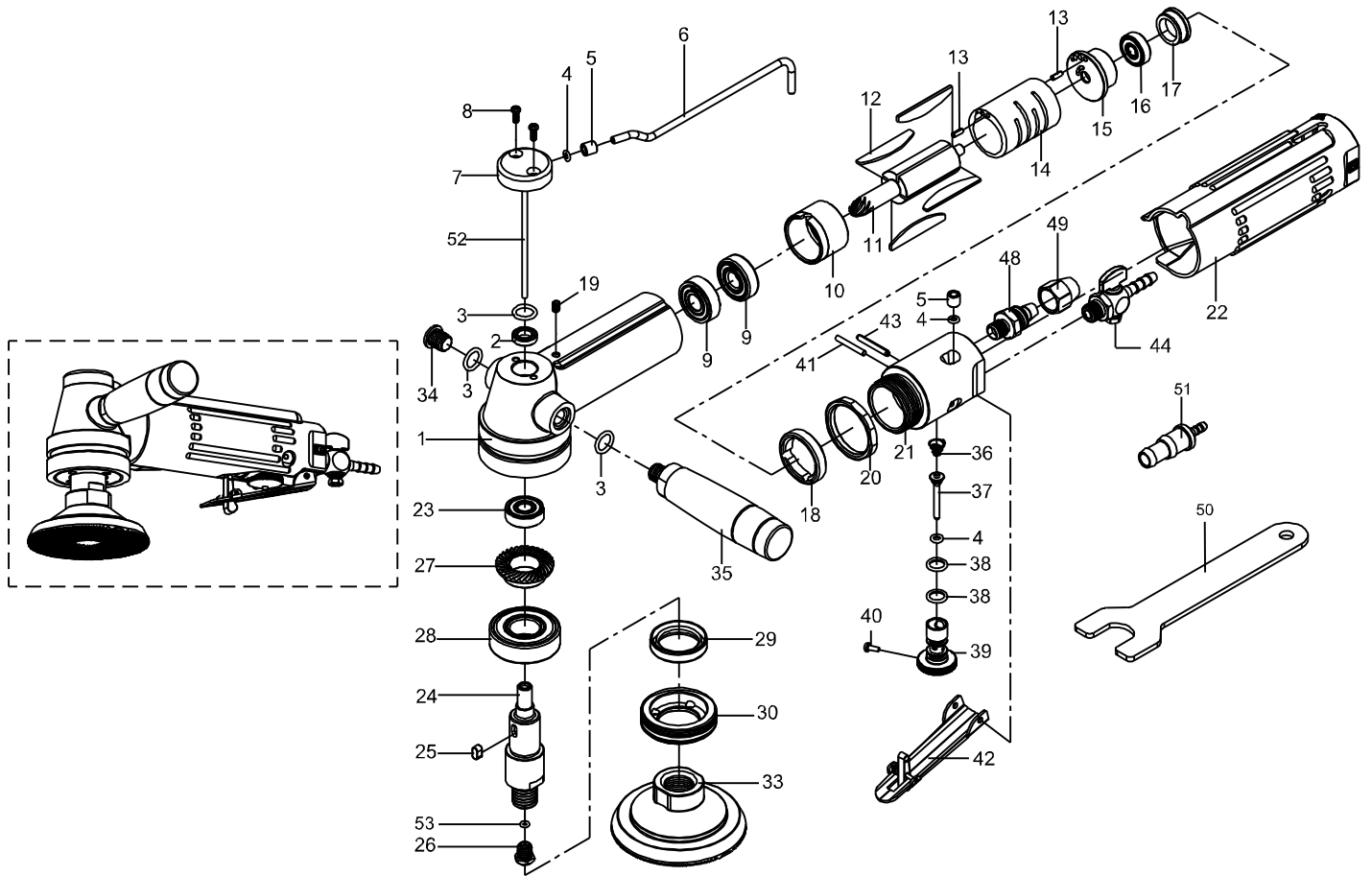
PARTS LIST

☛: Consuming Parts

Item No.	Part No.	Description	Qty.	Item No.	Part No.	Description	Qty.
1	7W001	Main Body	1	☛26	7W016	Shifting Knob	1
☛2	SG009	Oil Seal	1	27	MC008	Locking Screw	1
3	OR006	O-Ring	3	28	7W019S	Water Cock	1
4	OR044	O-Ring	2	32	7W042	Air Inlet Nozzle	1
5	7W013-2	Brass Cover	2	33	7W043	Hose Adaptor	1
6	7W020	Water Inlet Tube	1	34	7W021	Rubber Glue	1
7	7W023	Water Inlet Transfer Pos	1	☛35	B608LLU	Bearing	1
8	MC007	Screw	2	36	7W027D	Main Shaft (5/8")	1
☛9	B6000LLU	Bearing	2		7W027E	Main Shaft (M14)	
10	7W004	Cylinder Cap	1	37	KC003	Locking Key	1
☛11	7W006	Rotor	1	38	829055W	Water Exit	1
☛12	7W007	Blade	4	39	7W029	Spiral Gear	1
13	SP014	Spring Pin	2	☛40	B6203LLU	Bearing	1
14	7W005	Cylinder	1	41	SG011-1	Oil Sealer	1
15	7W008	Rear Cylinder Cap	1	42	7W033	Locking Screw Cap	1
☛16	B626LLU	Bearing	1	45	7W037	3" Sanding Pad	1
17	7W010	Dust-Proof Plug	1		7W037-1	4" Sanding Pad	
18	7W011	Locking Cap	1	46	7W040	Plug	1
19	MS010	Screw	1	47	7W038	Handle	1
20	7W012	Locking Ring	1	49	829048	Stop Spanner	1
21	7W013	Shifting Post	1	50	7W019-1	Water Valve	1
22	OR030	O-Ring	2	51	SPW5	Spring Washer	1
23	7W014	Air Plunger	1	52	218035	Pipe	1
24	SP033	Spring Pin	2	53	OR052	O-Ring	1
25	7W013-1	Bush	1				

If you need to order parts, please mark both **Parts No.** and **Description.**

Wet Air Sander (safety Lever, 4500rpm)



PARTS LIST

✿: Consuming Parts

Item No.	Part No.	Description	Qty.	Item No.	Part No.	Description	Qty.
1	7W001	Main Body	1	25	KC003	Locking Key	1
✿ 2	SG009	Oil Sealer	1	26	829055W	Water Exit	1
3	OR006	O-Ring	3	✿ 27	7W029	Spiral Gear	1
4	OR044	O-Ring	3	✿ 28	B6203LLU	Bearing	1
5	7W013-2	Brass Cover	2	✿ 29	SG011-1	Oil Sealer	1
6	7W020	Water Inlet Tube	1	30	7W033	Locking Screw Cap	1
7	7W023	Water Inlet Transfer Pos	1	33	7W037	3" Sanding Pad	1
8	MC007	Screw	2	7W037-1	4" Sanding Pad		
✿ 9	B6000LLU	Bearing	2	34	7W040	Plug	1
10	7W004	Cylinder Cap	1	35	7W038	Side Handle	1
✿ 11	7W006	Rotor	1	36	S046	Spring	1
✿ 12	7W007	Blade	4	37	218L027	Valve Pin	1
13	SP014	Spring Pin	2	38	OR030	O-Ring	2
14	7W005	Cylinder	1	39	218L012	Air Plunger	1
15	7W008	Rear Cylinder Cap	1	40	DR001	Riveter	1
✿ 16	B626LLU	Bearing	1	41	P011	Pin	1
17	7W010	Dust-Proof Plug	1	42	829005A	Throttle Lever	1
18	7W011	Locking Cap	1	43	SP026	Spring Pin	1
19	MS010	Screw	1	44	7W019S	Water Cock	1
20	7W012	Locking Ring	1	48	7W042	Air Inlet Nozzle	1
21	7WL045	Shifting Post	1	49	7W043	Hose Adaptor	1
22	7WL044	Rubber Sleeve	1	50	829048	Stop Spanner	1
✿ 23	B608LLU	Ball Bearing	1	51	7W019-1	Water Valve	1
24	7W027D	Main Shaft (5/8")	1	52	218035	Pipe	1
	7W027E	Main Shaft (M14)		53	OR052	O-Ring	1

If you need to order parts, please mark both **Parts No.** and **Description.**