

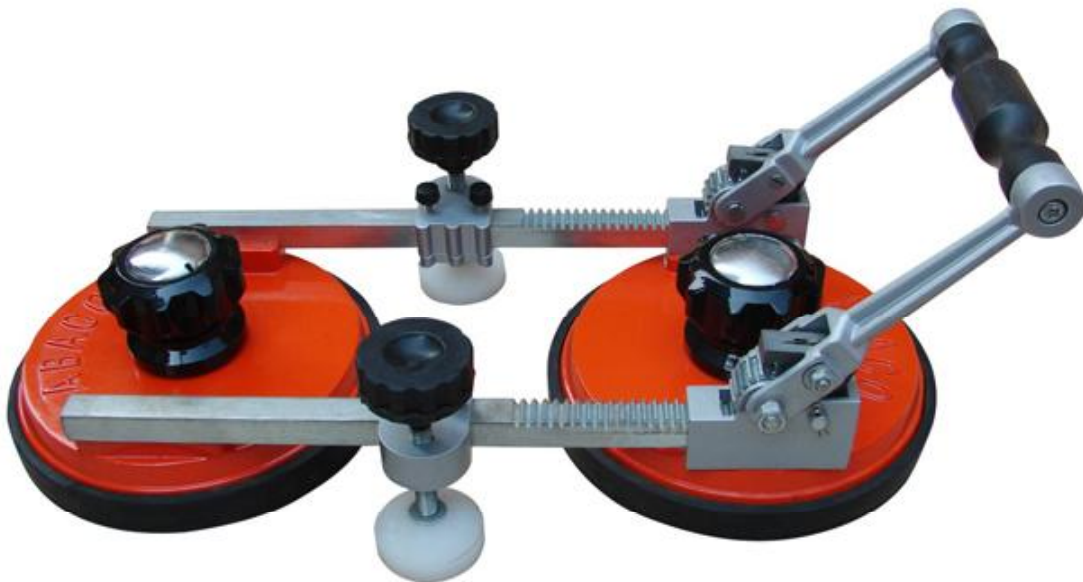


**ABACO MACHINES**

**[www.abaco.com.au](http://www.abaco.com.au)**

# **ABACO RATCHET SEAM SETTER M2**

## **OPERATION MANUAL**



**ABACO MACHINES INTERNATIONAL**

Unit 4/34-36 Fairfield St., Fairfield N.S.W 2163 Australia  
Tel : 61-2-9632-4990 Fax : 61-2-9632-1510  
Email : [abacomachines@abaco.com.au](mailto:abacomachines@abaco.com.au)  
Website : [www.abaco.com.au](http://www.abaco.com.au)

*Independently Distributed by:*

**ABACO MACHINES (USA)**

20224 S. Normandie Ave, Torrance, CA 90502  
Tel : 310-532-0366 Fax : 310-532-0499  
Email : [sales@abacomachines.com](mailto:sales@abacomachines.com)  
Website : [www.abacomachines.com](http://www.abacomachines.com)

## I. GENERAL

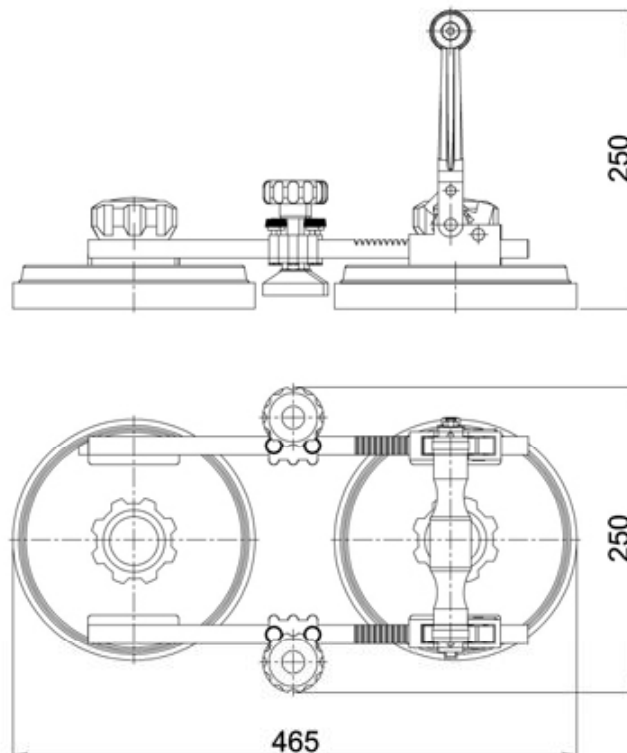
Ratchet seam setters M2 are designed for holding counter tops while they are being adhered together to create level and seamless counter tops. This double rail design comes with two leveling points and is very efficient and strong enough for any counter jobs.

## II. STRUCTURE

Seam setter M2 constructed of high strength aluminum steel and rubber pad.

### Specification:

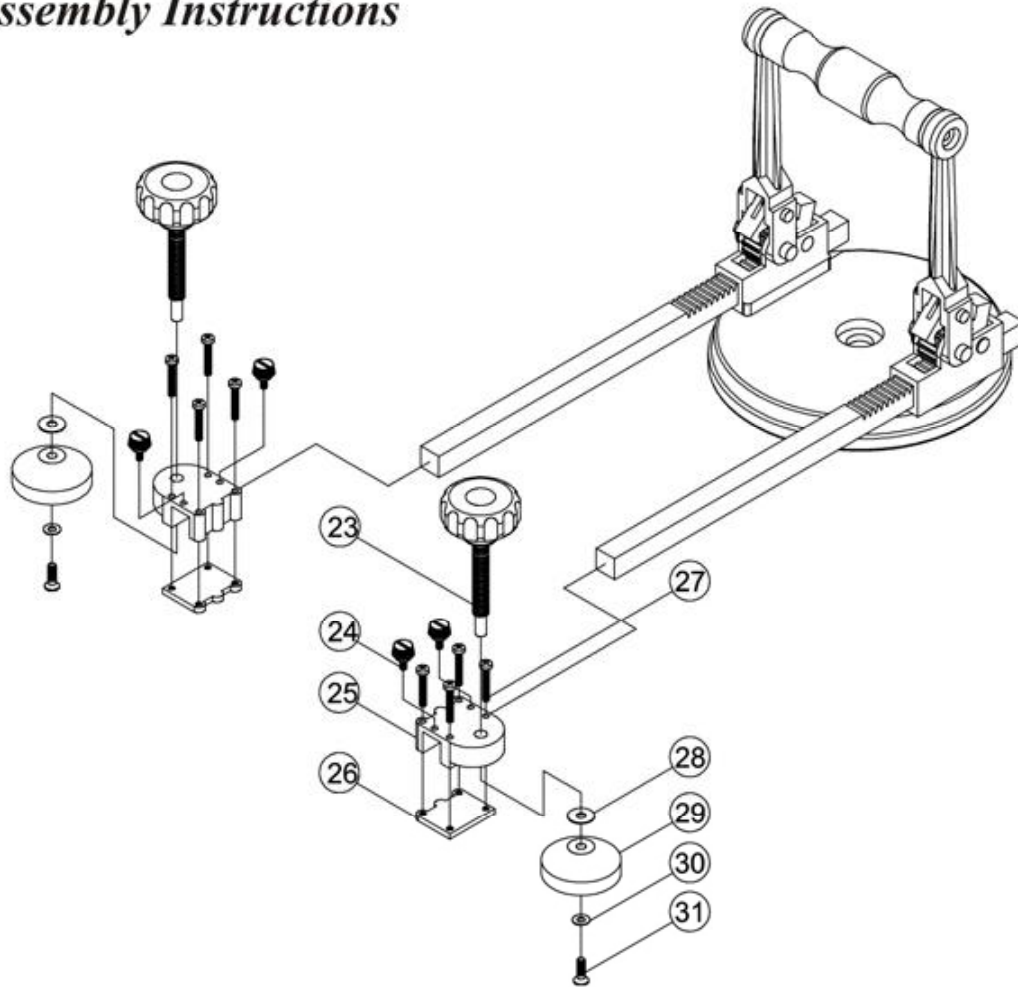
- Length : 16  $\frac{3}{4}$ " - 18  $\frac{3}{8}$ " (425mm - 465mm)
- Width : 9  $\frac{7}{8}$ " (250mm)
- Height : 9  $\frac{7}{8}$ " (250mm)
- Diameter cup : 8" (203mm)
- Holding capacity : 132lbs (60kg)
- Net weight : 15lbs (7kg)



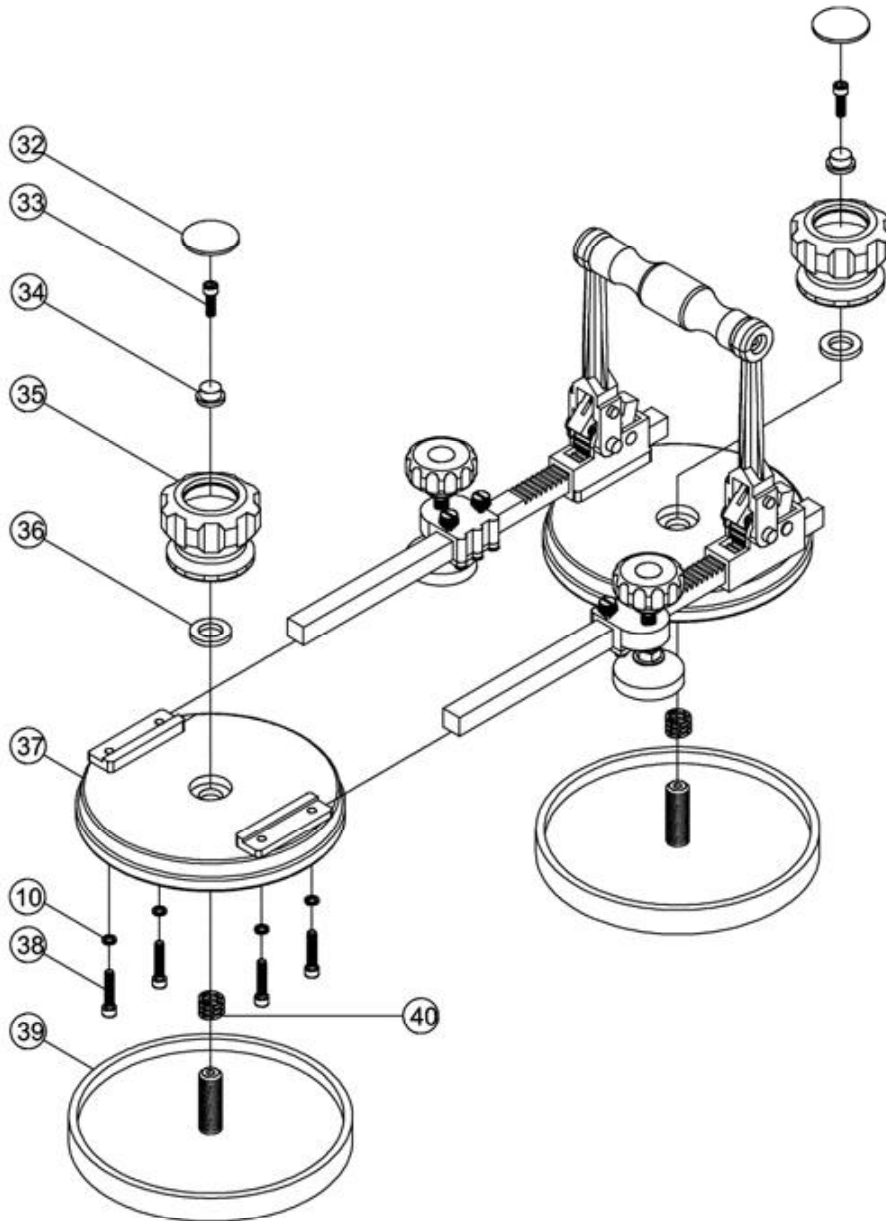


PART No.	DESCRIPTION	QTY
ARS-06	Steel Bush	02
ARS-07	M8 Pin	02
ARS-08	M6 Pin	02
ARS-09	Pion	02
ARS-10	Spring Washer $\varnothing 6 \times \varnothing 10 \times 1.5$	10
ARS-11	Locking Latch Spring	02
ARS-12	Return Latch	02
ARS-13	M8 Nut	02
ARS-14	Spring Washer $\varnothing 8 \times \varnothing 12 \times 1.5$	02
ARS-15	Split Pin	02
ARS-16	Rack Housing	02
ARS-17	Housing Pin	02
ARS-18	Extension Spring	02
ARS-19	Forward Latch	02
ARS-20	Cap screw M6x15	04
ARS-21	Housing A	01
ARS-22	Rack	02
ARS-23	Level Knob M10	02
ARS-24	Position Knob M4	04
ARS-25	Sliding Housing	02
ARS-26	Sliding Housing Cover	02
ARS-27	Screw M4x25	08

## Assembly Instructions



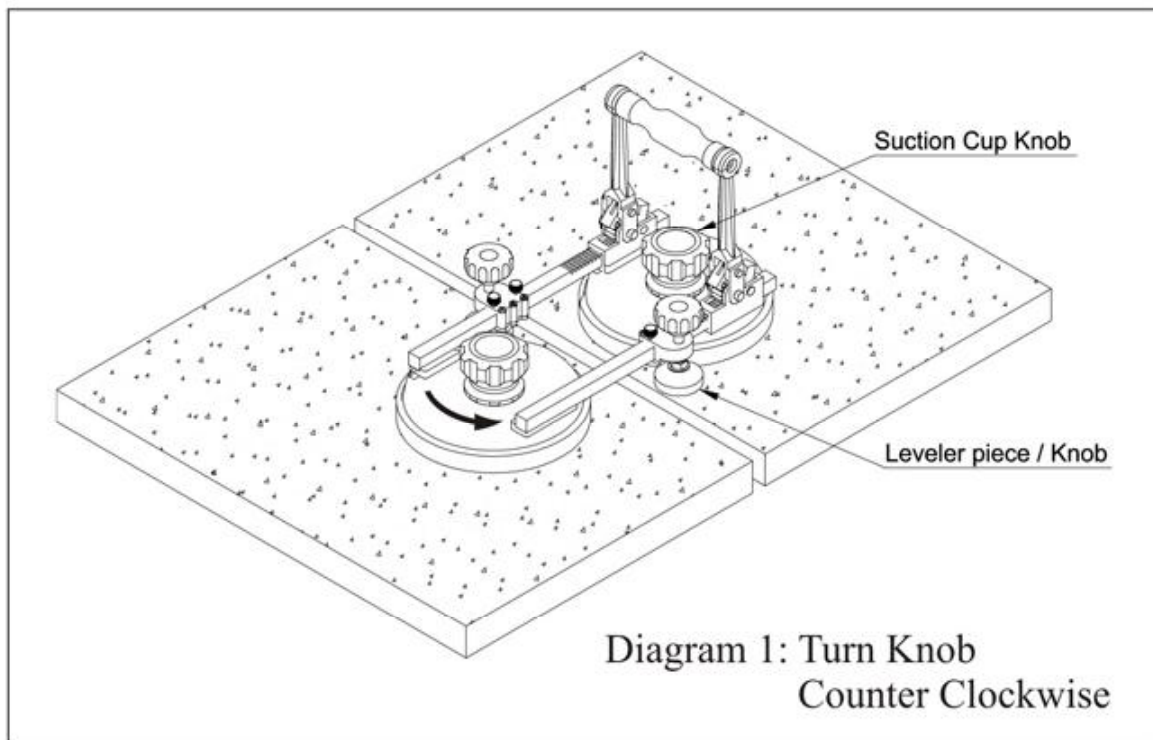
PART No.	DESCRIPTION	QTY
ARS-28	Washer $\phi 6 \times \phi 17 \times 1$	02
ARS-29	Levering Foot	02
ARS-30	Washer $\phi 5 \times \phi 11 \times 1$	02
ARS-31	Screw M5x10	02
ARS-32	Suction Knob Capping	02
ARS-33	Cap Screw M6x10	02
ARS-34	Bush	02
ARS35	Suction Knob	02



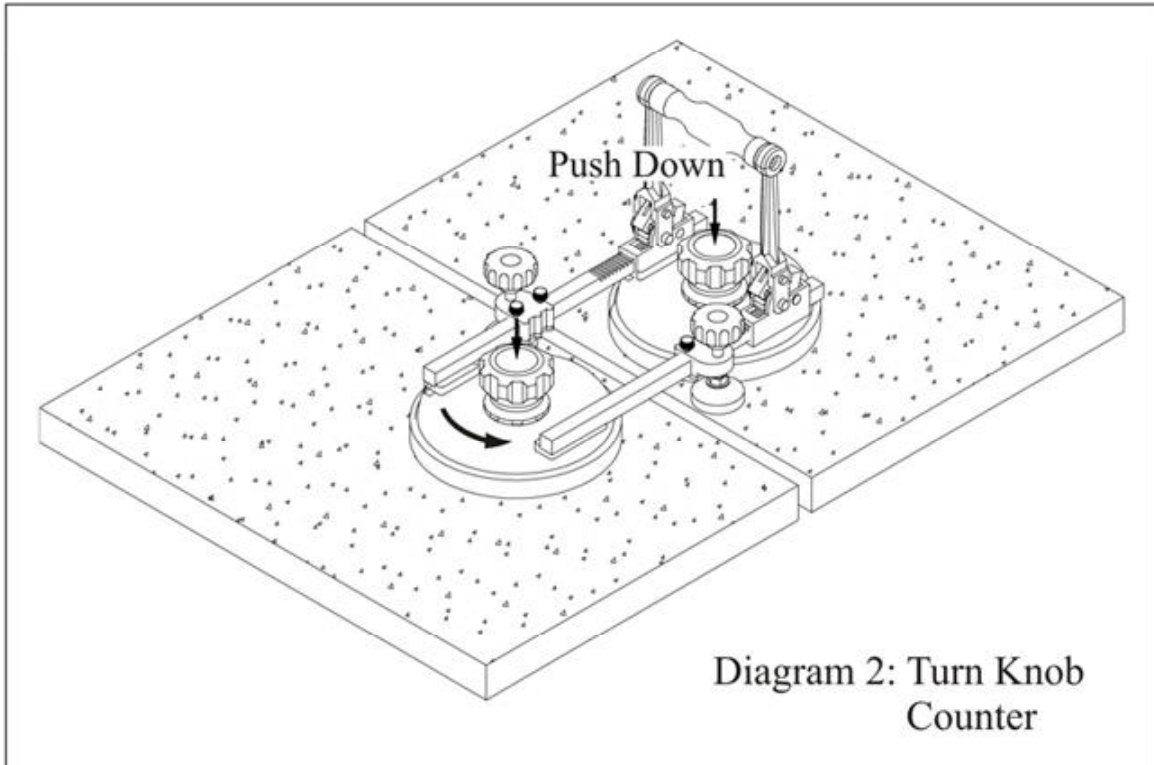
PART No.	DESCRIPTION	QTY
ARS-36	Nylon Washer $\phi 17 \times \phi 29 \times 6$	02
ARS-37	Housing B	01
ARS-38	Cap Screw M6x25	04
ARS-39	Rubber Pad	02
ARS-40	Rubber Pad Spring	022

## IV. INSTRUCTIONS

1. Line up counter tops evenly with minimal gap in between them as much as possible
2. Position each suction cup on each top as shown in diagram 1  
(Note: levelers on rails must be loose and not touching counter surface)
3. Turn each suction cup knob Counter Clockwise to release any pressure (Diagram 1)

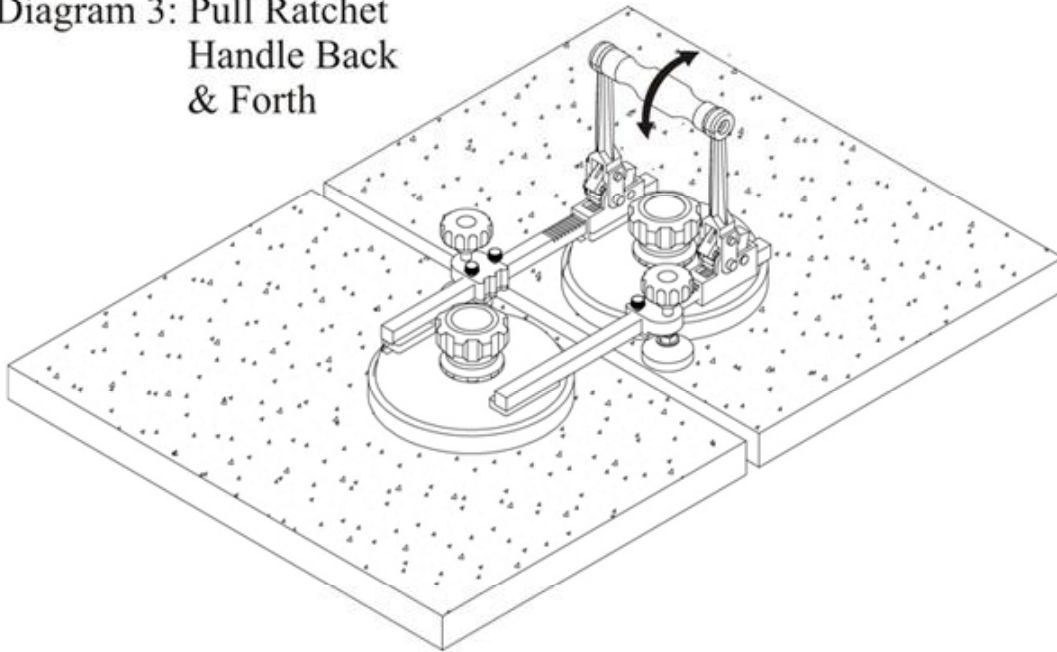


4. Push down on the center of each knob to establish a good grip between cups and counter surface
5. Continue to push down on knob then slowly turn Clockwise to secure a really firm grip (diagram 2)



6. Repeat step 3-5 to ensure suction cups are firmly attached to counter surface prior to proceeding to the next step
7. After secure both suction cups to counter top, use ratchet handle to adjust distance between counter tops by pulling on the handle back and forth until a seamless appearance is acceptable (diagram 3)

Diagram 3: Pull Ratchet  
Handle Back  
& Forth



8. To level counter top, slide the loose leveler pieces on the rails (step 2) to center of the seam (at the join) then adjust each leveler by turning leveler knob clockwise (diagram 4)

Diagram 4:  
Turn Knob Clockwise

